

# unilax™

Precise Design

Robust Built Quality

Optimal Performance

Minimum Maintenance

Long Service Life

Easy to Install

## Water & Wastewater Treatment Solution

SALES | SERVICE | SPARES | AMC



Products  
You  
Know



Value  
You  
Expect



Service  
You  
Trust



AN ISO 9001:2015 CERTIFIED COMPANY





## About Us

Unilax is recognized throughout northeast India as one of the best solution provider to water & wastewater treatment. Our customers have trusted the quality of the product and premium service that we provide. Anchored in experience, Unilax Water & Wastewater treatment lineup remains a comprehensive offering in this part of the world. Today, as one of the largest solution provider for Water & Wastewater treatment, our number one priority continues to be unparalleled responsiveness to meeting customer needs. Our unwavering commitment to developing long-term customer relationship, innovative product designs and installation is evident with over hundred set-ups. We are continually improving deliver and response time, while setting higher performance standards in the industry.

We are determined to deliver great value, exceptional quality and quick turnaround on service calls. So that next time you or your reference evaluating the same solutions, remembers the best and give us a call. Our sales team would be honoured to assist you with your application challenges and requirements. The team members are conveniently located and easy to reach.

When it comes to Water Treatment Plants, we offer a wide range of products which enables us to optimally fulfill the various demands of our clients. Be it a Food Processing Unit, Factory, School, Office, Hospital or Packaged Drinking Water Manufacturer, we have solutions for every field.

## Reverse Osmosis Plants

We are the supplier and trader of complete RO Water Treatment Plant and Packaging Machineries.

All our offered products are designed with utmost precision by making use of superior grade components that has been obtained from the very reputed industrial source.

Our Plants are acknowledged for various modes of operations such as Manual, Semi Automatic and Fully Automatic. We are equipped with sophisticated machinery and highly experienced work force. Being highly durable, reliable and efficient in nature, these plants and machinery are easy to use and maintain. Along with this, our manufactured range is largely suitable to stand tall on the expectation of our clients.

Our offered Reverse Osmosis Plants works on basis of Membrane Technology, in which applied pressure is used to overcome osmotic pressure. It can remove many types of molecules and ions from water and is used in both industrial processes & production of potable water. Said machines are performance oriented and are delivered in varied technical configurations.

**Category wise we have divided the plants into three categories :**



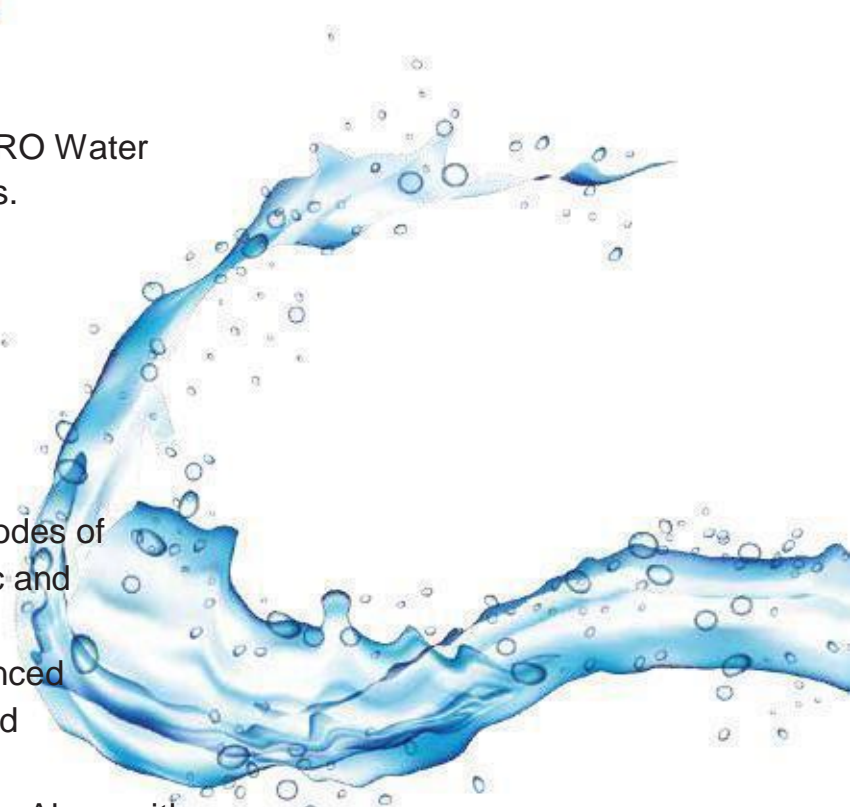
**R.O. 25 LPH**



**R.O. 50 LPH**

### **LCP (Low Capacity Plant) :**

LCPs comes with a limited purification capacity of 25 - 100 Ltr. per hour. This plants are suitable for various institutions like School & Colleges, Hospitals, Offices, Restaurants etc. This budget plants comes with minimum investment and less maintenance cost.





## MCP (Medium Capacity Plant) :

MCPs falls under the category of Commercial Plants. It has multiple usage in different industries. This plants are suitable for Small Scale Packaged-water Industry, Food Processing Units, Apartments, School & Colleges etc. MCPs comes with a purification capacity of 100 - 2000 Ltr. per hour. This plants are popular for its robust built-quality and heavy duty performance.



**R.O. 2000 LPH**



**R.O. 10000 LPH**

## HCP (High Capacity Plant) :

HCPs are the Permium BIS standard Industrial R.O. Plant with a purification capacity of above 2000 Ltr. per hour. HCPs are precisely designed, made with high grade stainless steel / FRP and high quality components. This plants are mainly installed for packaged drinking water projects.

## Packaging Solutions



**Pet-Blow Machine**



**Bottle Filling Machine**



**Jar Filling Machine**



**Pouch Packing Machine**



**Batch Coding Machine**

## DM Plants

Our array of DM Plants is assembled using Two Bed Water Deionizer and helps in eliminating minerals from water to purify it. These plants consist of FRP/MS Rubber lined pressure vessels that are connected in the form of a series using internal fittings. The first unit of these plants has high capacity, strong acidification that replaces positive ions of salt with hydrogen ions, resulting in the formation of varied respective acids.



**SOFTNER PLANT 2000 LPH**



**DM PLANT 2000 LPH**

## Water Softener Plants

Unilax Water Softener Plants are used in various industries for different kinds of applications.

These products are capable of removing calcium and magnesium ions from water and are available with multiports.

We also offer customization of these products as per the requirements of the clients. These are very attractive compact in size and available at reasonable rates.

## Iron & Arsenic Removal Plants

These Plants are used for treatment of ground water and surface water typically for reduction of iron, manganese, ammonium, and aggressivity in waterworks, companies, and private households.

We provide iron & arsenic removing filters with manual and automatic backwash system. The tanks (vessels) are made of either of FRP or Mild Steel (MS), while for special applications, we also provide stainless steel tanks on request.



**IRON REMOVAL PLANT 10000 LPH**

## Water Treatment Solution for Swimming Pool

Unilax Swimming Pool Filtration system is precisely designed and made of high quality components.

Offered plant is available in a variety of specifications to choose from. In a step by step process it retreats the water in a swimming pool by iron removal, water softening, carbon filtration and chlorine dosing.

This maintains the pH level and makes the pool biologically safe by removing Bacteria, Viruses, Algae and other Pathogens.



**FILTRATION PLANT FOR SWIMMING POOL**

## Sewage Treatment Plants ( STP )

Unilax has the expertise in Designing, Fabricating, Installing and Commissioning Sewage Treatment Plants for treating sewage generated by Industry, Large Colonies, Hotels, Hospitals, IT Parks and commercial buildings.

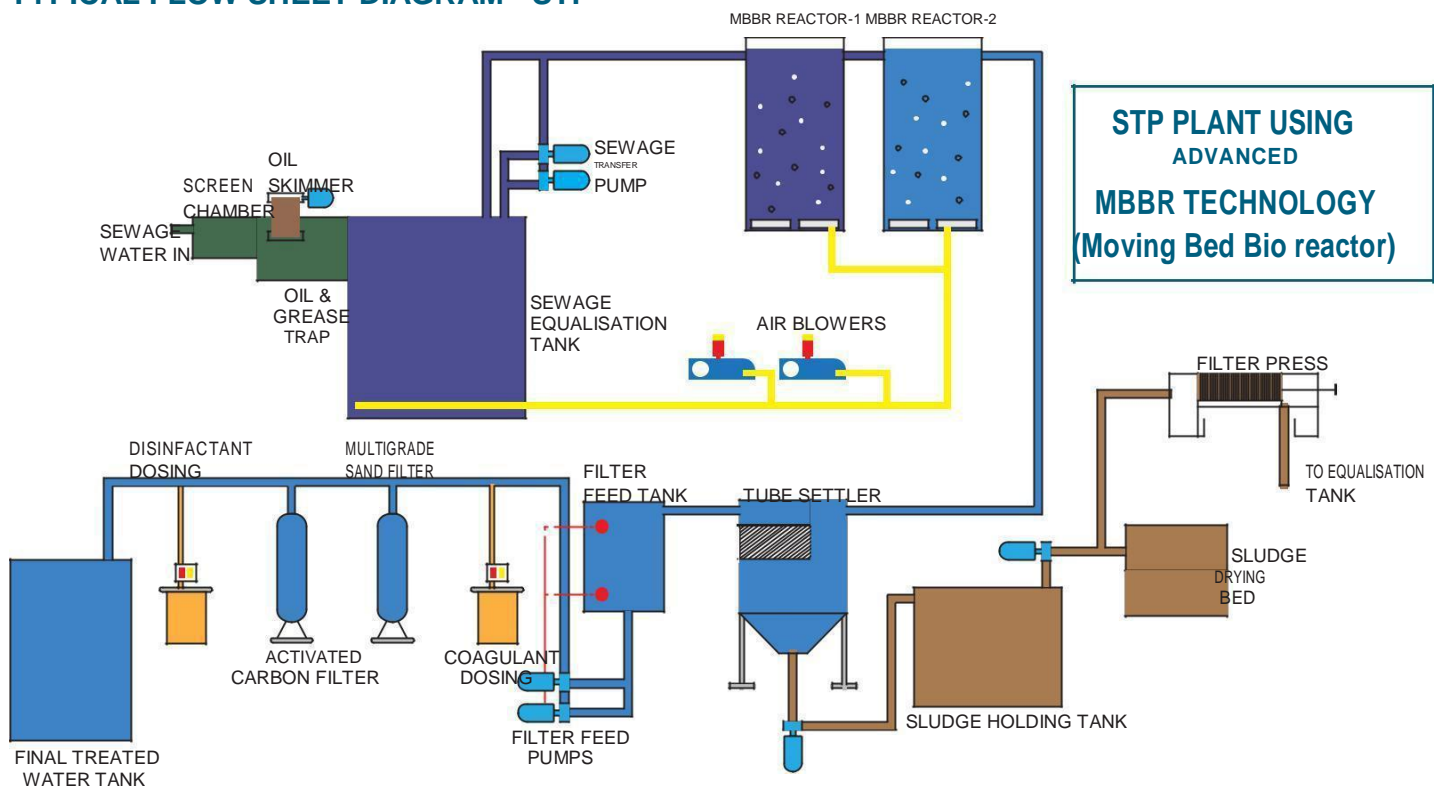
Now a days the Sewage Treatment Plant (STP) became statutory requirement of all the State Pollution Control Boards, everybody, whether Hotelier or Industrialist are looking for economical, easy to install and operate compact type Sewage Treatment Plant.

Since the land is extremely expensive, very few industries could afford the large treatment units as recommended by most of the Consultants.



We are being a pioneer in the field and always in the search of latest and techno commercially viable technology, system by which the need of the society can be easily satisfied.

### TYPICAL FLOW SHEET DIAGRAM - STP



**Principle of Treatment :** Its working on the principle of Aerobic Treatment with the help of aerobic bacteria, which is most conventional and proven method throughout the world.



## Effluent Treatment Plants ( ETP )

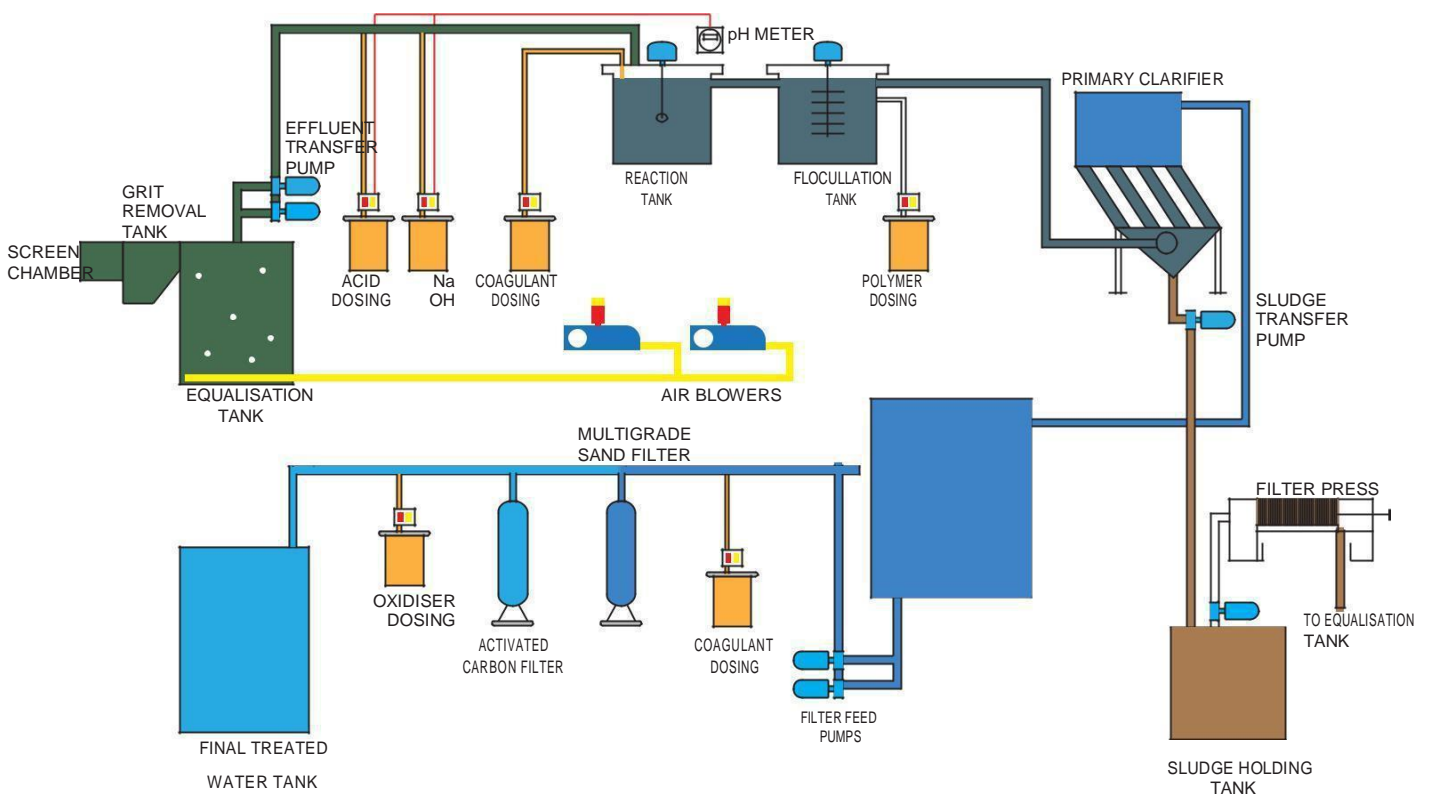
We Design, Manufacture, Supply, Erection and Commissioning Effluent Treatment Plant (ETP) on Turnkey basis for various types and natures of wastewaters, effluents which combines advanced physico-chemical treatment processes with tertiary polishing system for the removal of organic, inorganic, oil and grease, heavy metals & suspended solids.

Our methodology : We analyze the effluent samples for different effluent parameters as per nature and compositions, carry out the treatability studies by using different methods checking techno-commercial Feasibility and then design treatment schemes, process accordingly to suit the purpose and need.



Our ETP systems are very compact, tailor made designs, portable, required very less foot-print to accommodate, energy efficient. The up-gradation, modification in the existing ETP system is possible to achieve desired limiting standard laid down by the Pollution Control Board (PCB).

### TYPICAL FLOW SHEET DIAGRAM - ETP






ETP PLANT CONTINUOUS TYPE ( ONLY CHEMICAL TREATMENT )

<sup>TM</sup>  
unilax

**UNILAX INDUSTRIES PVT. LTD.**  
Water & Waste Treatment Division

**Office Address:** 58, Metcalfe Street, 2nd Floor, Room No.- 2B,  
Kolkata - 700013

 +91-33- 4003-5033, +91 9830049878, +91 7003675035 (H.O.)

 [info@unilax.co.in](mailto:info@unilax.co.in)  [www.unilax.co.in](http://www.unilax.co.in)

**24X7 Helpline**  
**9830049878**